



A User's Guide
Everything you need to know
for an amazing stay at **match guest house**

Vol.20230901

Welcome!
match guest house is a house complex located in the Tatsugo
village, northern Amami Oshima. We are happy to help you
understand what is like living in the island's village.

Please relax, unwind, have fun, and enjoy your adventure in Amami Oshima!

Table of contents

WELCOME TO THE TATSUGO VILLAGE! 3

CANCELLATION POLICY 4

CHECK IN/OUT 5

ABOUT THE HOME 6

SAFETY INFO & HOUSE RULES 10

TERMS & CONDITIONS 18

ADVICE FOR TATSUGO LIFE 19

HOW TO ENJOY THE VILLAGE OF TATSUGO 23

TRANSPORTATION 26

TELEPHONE DIRECTORY エラー! ブックマークが定義されていません。

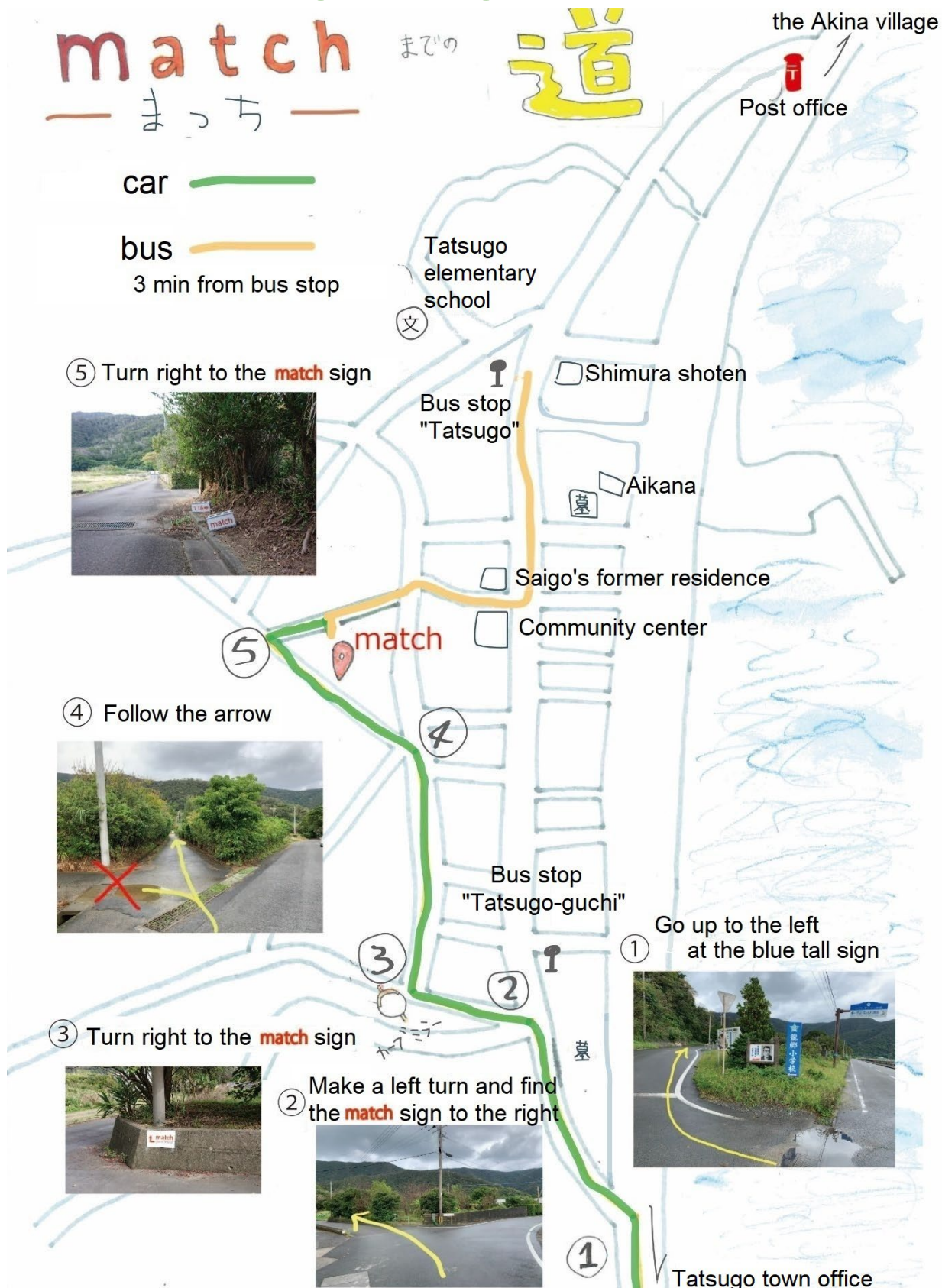
BBQ TOOL SET RENTAL..... 30

EMERGENCY PHONE NUMBER 31



Welcome to the Tatsugo Village!

271 Minato, Tatsugo, Tatsugo-cho



Cancellation Policy

A cancellation fee applies to any cancellation of reservations after 14 days prior to the check-in date as shown in the table below.

Cancellation Time	Cancellation Fee
15 days or more prior to check-in date	FREE Cancellation
8 to 14 days prior to check-in date	20% accommodation fees
3 to 7 days prior to check-in date	30% accommodation fees
2 days prior to check-in date	60% accommodation fees
0 days prior to check-in date/no-show	100% accommodation fees

- If you have already paid the accommodation fees, we will refund after deducting the cancellation fee and a bank transfer fee from them.
- Cancellation fees will be waived if your trip has been impacted by COVID-19, or if you are unable to arrive due to the cancellation of flights or ferries due to a typhoon.
- If you need to extend the stay due to the cancellation of flights or ferries, we will accept only cash for the extra accommodation fees by the original check-out time.

Check In/Out

Check-in time: 2:00PM – 6:00PM

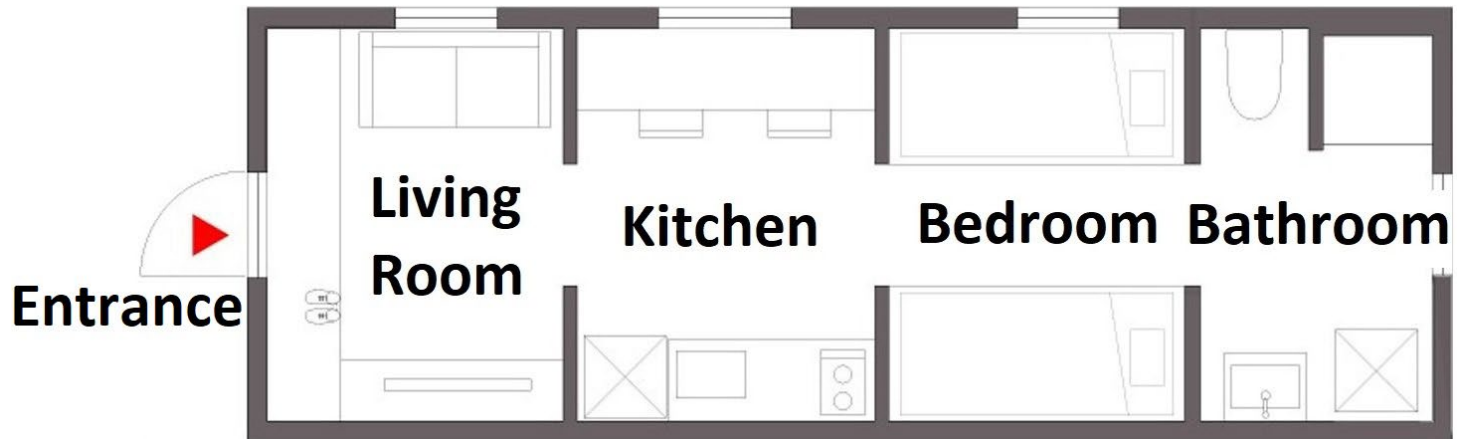
Please let us know the estimated time of arrival (flight/ferry info as well if applicable) in advance so that our property manager will welcome you and hand over the key at match guest house.

- Please contact us if it is difficult to check in between 2 p.m. and 6 p.m. Check-in time can be arranged.
- Under the law, we request foreign nationals to fill out a guest registration form on your arrival if you are n.
 - ✓ If you do not live in Japan, we will ask you to show your passport and will make a photocopy of it under the law (click [here](#) for the details).
 - ✓ If you live in Japan, we will ask you to show your ID issued in Japan such as a driver's license.

Checkout time: 11:00AM

On your arrival, please tell the property manager your estimated time of departure. Or call at **+81-70-6656-0278 (Sato)** an hour prior to your departure.

About the Home



Free parking space for a car per house.

Free Wi-Fi

You will find ID and passwords in the house.

Air conditioning

There are two air conditioners in the kitchen and the bedroom. A remote to control temperature can be found on each room's wall.

No TV is available

Only shower is available. No bathtub in the house.

The bedroom and the bathroom are separated by a curtain, **not a door**.



Living Room

travel guidebooks/brochures, first aid kit, insecticide, flashlight, an umbrella and umbrella stand, thermometer

* Feel free to read any books on the shelves. You may take a copy back home if there are two or more copies.

Kitchen

- You will find a complimentary drink, barley tea, in the fridge. Pour water to the jug and put it back to the fridge. When the water gets cold enough, the tea is ready.
- The tap water is drinkable. A bottled still water is for sale at JPN150.

air conditioner, refrigerator, microwave, gas stove (no oven), tableware (plates, dishes, bowls, cups, glasses), cutlery (chopsticks, spoons, forks), cookware (stock pot, saucepan, frying pan, tea kettle, cutting board, knife, colander & bowl set, cooking chopsticks, etc.), corkscrew, can opener, iced tea jug, paper towels, dish soap, scrub sponge, hand wash, built-in table, chairs, trash bags, trash can for burnable/combustible items, fire extinguisher



Bedroom

air conditioner, bed, futon, bed linens, clothes hangers, underbed storage containers

Bathroom

hand sanitizer, shower, electronic bidet, toilet papers, sink, hand towel, bath towel, body wash, shampoo, conditioner, hand wash, toothbrush holder, hair dryer,



facial tissue, bathmat, washing machine (no dryer), indoor laundry line, hanging dryer with clips, mesh laundry bag, laundry detergent (paid), vacuum cleaner, disposable toilet brush

* Toothpaste, hairbrush, and nightwear are not provided.

* Travel kit (toothbrush, razor, cotton swabs, body scrubber towel) is sold for JPY300. A laundry detergent gel ball is available for JPY50.

Front yard/Backyard

patio table, chairs, clothesline, trash bins

< To Borrow or Buy >

■ Amenities Price List

VAT included

	Unit Price (JPN)	
	Stay for 2-5nights	Stay for 6nights-
A laundry detergent gel ball	50	50

■ Rental items

VAT included

	Unit Price (JPN)	
	Stay for 2-5nights	Stay for 6nights/month
small fan	free	free
futon drying rack	free	free
large/small clay cooking pots	free	free
ashtray	free	free
toaster	1,000	free
rice cooker	1,000	free
bicycle (first come first serve)	1,000	free
electric bicycle (first come first serve)	2,500	1000/3000
BBQ set (refer to another page)	1,000	free
6 camping chairs	100	free
printer (first come first serve)	2,000	1,000
10 sheets of printer papers	40	20
23-inch monitor (first come first serve)	4,000	2,000
5-port USB charger	free	free
3-meter power extension cord	free	free
1.5-meter HDMI cable	free	free

Safety Info & House Rules

- Take off your shoes at the entrance and just relax with bare foot in the house.
- Smoking is not allowed in the house. Please tell the property manager on your arrival if you smoke, so we will set up an ash bin next to trash bins in the backyard. Remember to keep certain amount of water in the ash bin for safety, and to keep the area clean.
- Quiet hours are after 9 p.m. As the house is in quiet neighborhood surrounded by mountains, loud and rowdy voices/music echo through the village. Please do not prevent people in the village from getting a good sleep.
- Unregistered guests are not allowed to stay overnight at the house.
- To use hot water in shower/kitchen sink, turn on the hot water heater switch on the kitchen wall. Please turn off after use.
- A portable night light can be found on the wall by the sofa. Just unplug it and plug into any room's outlet you want. It will be automatically turned on when the room gets dark.



- How to open windows

Unlock the windows before opening.

①



②



③



④



Finally, turn the handle - clockwise.

- We provide consumable supplies enough for a week stay. When any of them run out, please refill them yourself.
- Housekeeping service is available once per week after a week stay. Our property manager will do a quick clean, replace linens, and refill the supplies once a week. If you do not need this weekly quick clean, let us know on your arrival. In that case, please refill the supplies yourself.
- Alarm will go off if smoke/gas detectors sense an extreme heat or smoke in the kitchen. Please call us immediately in that case.

Garbage & Waste Sorting

- Tatsugo town has strict rules to throw garbage (and waste). Designated garbage bags are required to be used. Those are classified into colors as shown in the table below. Do not hesitate to ask us how to sort garbage.

Non-burnable /incombustible (燃えないゴミ)	Batteries, metals, ceramics, glass items, cans, etc.
burnable /combustible (燃えるゴミ)	Other than the above: paper, plastic bottles, plastic containers and packaging, kitchen waste, and so on.

- The trash can inside the house is specifically for burnable/combustible items. When it gets full, please throw it to a trash bin (yellow trash bag) in the backyard. You can find a new plastic bag under the kitchen sink.
- There is no trash can for non-burnable /incombustible items such as cans inside the house. Please throw those items directly the trash bin (blue trash bag) in the backyard.

Kitchen Garbage

- There is **no garbage disposer**. Please **do not** throw food debris directly to the kitchen drain.
- You will find small mesh bags under the sink. Use it to catch food debris in a shallow basket of a drain opening.
- You can also use the mesh bag with a waste bag holder. The holder can be found under the sink as well.



- To prevent food debris from smelling in summer, (1) wrap food debris/the mesh bag in newspaper, (2) put it in a small plastic bag, and (3) throw it to the trash bin (yellow trash bag) in the backyard. You can find newspaper under the sink. *Newspaper can absorb moistures so that germs do not germinate, and that smells are reduced.



- Please use the sink outside to remove scales and guts of fish.



Kitchen

- Dish rack is not available. You can use a dish drying mat hung next to the fridge. Just place dishes on it after you wash them. A dish towel (to dry dishes) and a kitchen cloth (to wipe table) are also hung on the same towel bars.
- Please help yourself to use sugar and salt. Sugar is on the fridge, and salt is in the fridge. You may need to purchase additional seasoning/condiment such as soy sauce if necessary.
- A fire extinguisher is in the kitchen. Please read an instruction placed in the house so that you can use it instantly when you need it. Do not play with it when you do not need it.

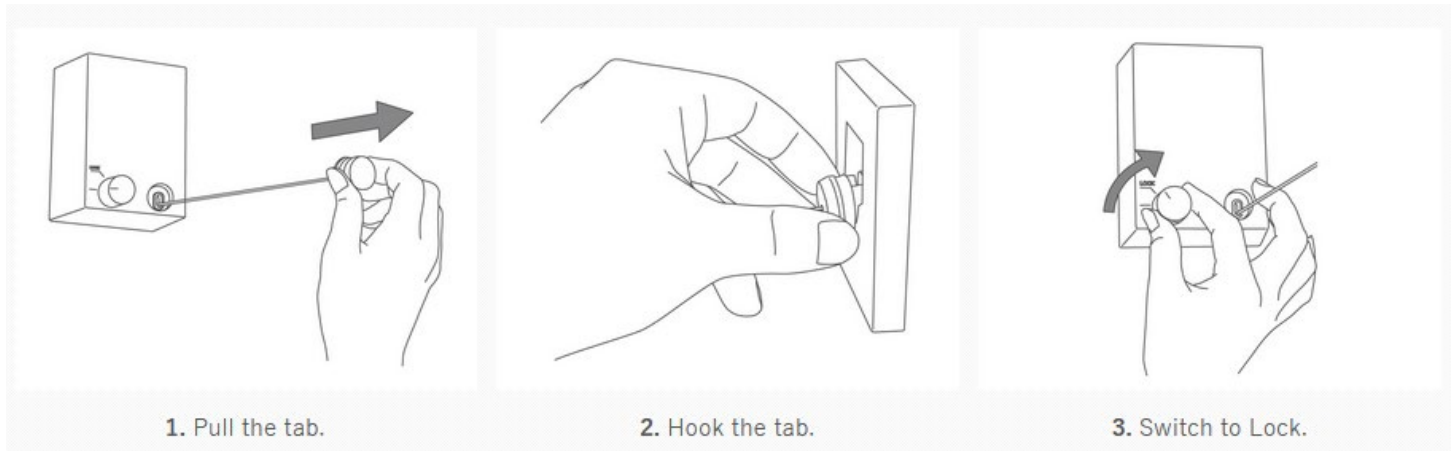


Bathroom

- Please mind your head when you use the bathroom sink. Especially when you wash your face, pay attention to the shelf.
- Because of the climate of Amami Oshima characterized by high temperatures and high humidity, mold and mildew grow fast and easily if you keep bathroom (and kitchen as well) wet and/or unsanitary. We truly appreciate your cooperation to keep the bathroom clean by proper ventilation:
 - ✓ Keep the shower room exhaust fan turned on during your stay.
 - ✓ keep the washing machine lid open after every load of wash, so moisture can escape. It is essential to prevent mildew growth in washing machine tub.
 - ✓ Put the bathmat back to the holder after a shower.



- Please place **laundry items inside mesh laundry bags** for a load of laundry to prevents them from getting damaged.
 - A laundry line is stretched across the bathroom walls. If you want to



retract it, follow the instruction backwards.

- ✓ Maximum load is 10kg/22lb.
 - ✓ Do not unhook the tab while laundry is still hanging on the line.
 - ✓ Do not use it for anything other than laundry.
- This rack is placed on the wall by the shower door. Just pull down the cover and hang towels.

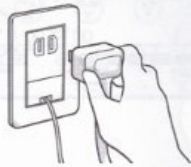


- We only have an electronic toilet. In a power outage it does not flush, so you need to manually flush with using a bucket of water. The bucket is found under the bathroom sink. Please call us for any help.

<HOW TO FLUSH IN A POWER OUTAGE>

1 電源プラグを抜く

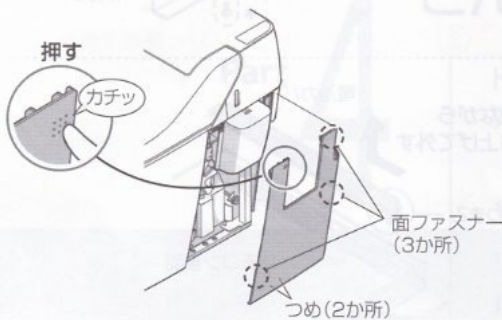
電源プラグは必ず抜いて作業してください。



1. Unplug the socket

2 サイドカバー（右）を外す

- ① サイドカバーの ■ 部を押す。
- ② すき間から指を入れ、外れるまで水平方向に引き出す。
(面ファスナーと、つめを外す。)



2. Take off the cover from the right side of the body.

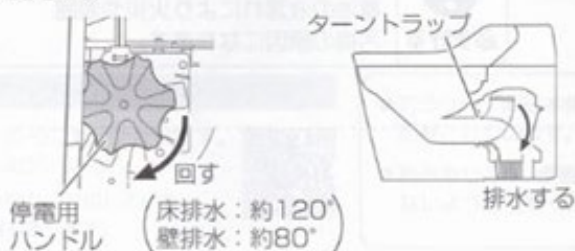
3 停電用ハンドルを時計回りに回す

(床排水：約120°・壁排水：約80°)

ターントラップが下を向き、便器洗浄面の水を排水します。

ハンドルを回しすぎると破損のおそれがあります。

完全に排水できない場合は、ターントラップが下を向いたままの状態、便器洗浄面にバケツで水を入れ排水してください。



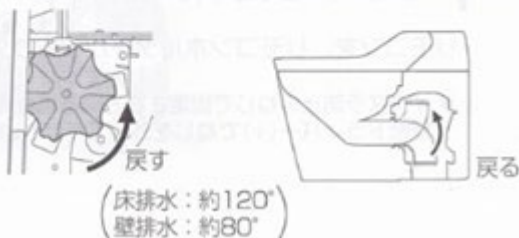
3. Rotate the handle clockwise to flush the toilet bowl water to a drain.

4 排水完了後、停電用ハンドルを 反時計回りに回す

(床排水：約120°・壁排水：約80°)

ターントラップが元に戻ります。

ハンドルを回しすぎると破損のおそれがあります。

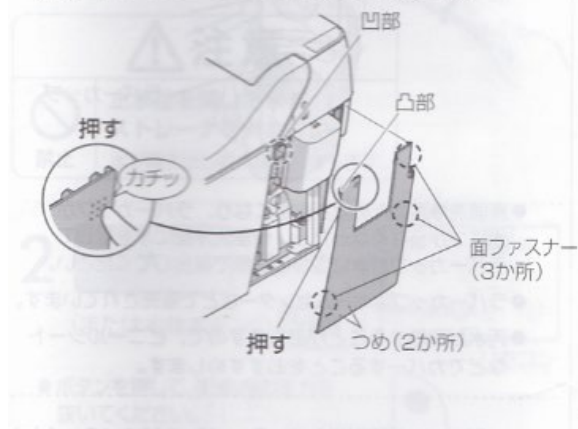


4. Rotate the handle back counterclockwise after the water is flushed.

<HOW TO FLUSH AFTER A POWER OUTAGE>

1 サイドカバー(右)を取り付ける

- ① サイドカバーの凸部を便器の凹部に合わせる。
- ② 部を押す。
- ③ 面ファスナーとつめの部分を押し込む。



2 電源プラグを差し込む

電源プラグを差し込んで約3秒後に、
本体表示部の電源ランプが約10秒間
点滅します。

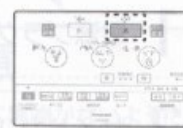
※この10秒間は全ての
操作を受け付けません。



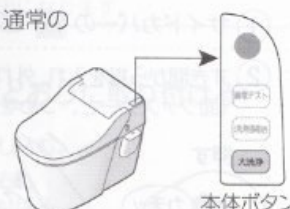
3 大 を押す

(または本体ボタンの 大洗浄)

便器洗浄面へ給水し、通常の
使用状態に戻ります。



リモコン



本体ボタン

1. Put the cover back to the body.
2. Plug the socket.
3. Push the Full Flush button.

Terms & Conditions

Applicable laws and regulations are applied to any matters not covered in this section.

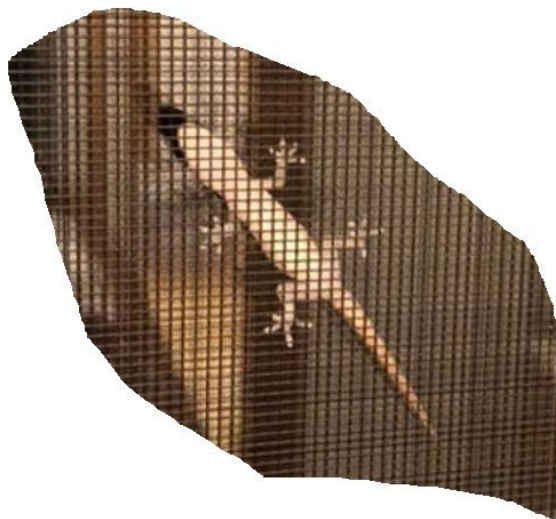
- All guests are not allowed to bring following items to the house and the property:
 - ✓ Items give out an extraordinarily bad/strange smell.
 - ✓ Gunpowder, explosives, corrosive items, ignitable/inflammable items, or other articles which are likely to cause a hazard or risk to other guests and the houses.
 - ✓ Items prohibited by law to use or to possess such as firearms, swords, drugs, designer drugs, and so on.
- Removing or altering any fixtures and equipment are not allowed.
- Damage to rooms, fixtures, furnishing, and equipment including the removal of electronic equipment, towels, etc. will be charged at 100% of full and new replacement value plus any shipping and handling charges. If unreported damages are found right after you have checked out, you will be charged likewise.
- We assume no liability for lost, misplaced, stolen, or damaged personal valuables or belongings.
- If excess usage of utilities (electricity, gas, water/sewer, etc.) is found after your departure, you will be charged according to the excess amount of usage.
- We are not liable for any accident, injury, loss or damage to your property, etc. if it is caused by your fault, negligence caused by you, or force majeure such as natural disaster.
- If the house key is lost or stolen, you will be charged for the total replacement costs.

Advice for Tatsugo Life

- Beware of Habu! It's a nocturnal poisonous snake (1-2m/3-6ft) living on Amami Oshima. Habus are highly active at night and stay in shade and shelter during the day. They are also good climbers and swimmers. For night out, always carry a flashlight with you to pay attention to your steps. As they can feel heat radiated from you, do not get closer to or enter bush area day or night. If you encounter a Habu, just stay away from them.



- [Yamori](#), literally means 'house protector' in Japanese, are geckos commonly found in and outside houses on Amami Oshima. They are beneficial to us by eating unwanted bugs around the house. Please don't be surprised by their chirping or clicking noise. Yes, they cry!



- When conditions such as high humidity are met in early summer or early fall, swarms of ants and termites fly out to bright lights at sunset. To avoid them from entering to the house, please make sure to close the window curtains, turn on air conditioners instead of opening windows.



← swarms of winged bug in early fall

- The climate in Amami Oshima is unstable and characterized by high temperatures and high humidity. The weather changes suddenly throughout a day. For example, heavy rains after beautiful sunny morning are very common.

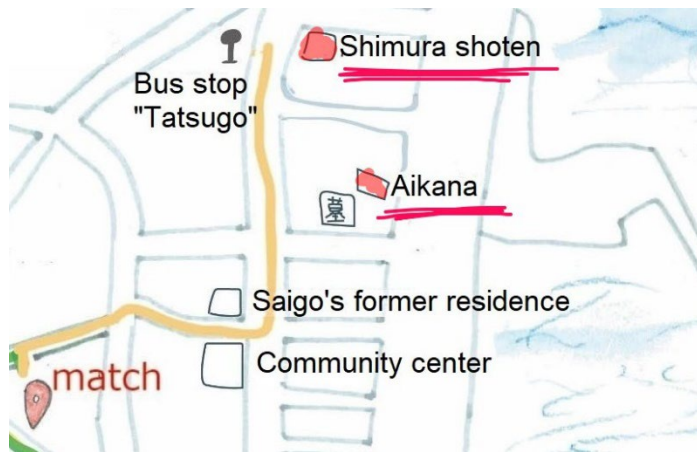
Shopping & Dining out

Kindly be advised that many shops and restaurants in Amami Oshima do not accept credit cards, traveler cheques, or mobile payment apps.

No cafés and restaurants are in the village but some lovely local stores.

Please refrain from stopping by these stores for two weeks after your arrival in Amami Oshima.

- ✓ Shimura shoten ([Google map](#))
Food, beverages, alcohol, and daily necessities
Cash only
- ✓ Aikana ([Google map](#))
Homemade local sweets, local specialties
Closed on Thursdays
Cash only



The closest restaurant from the village is

- ✓ Seafood restaurant Ban-ya ([Google map](#))
 Hours: 11:30AM- 2:30PM, 5:00PM – 8:00PM
 Closed on Wednesdays and Sunday nights
 Phone: +81-997-62-2125
 Address: 8-2 Tatsugo, Tatsugo

The closest bento (lunch box) shop is to the right after you pass by Ban-ya while heading towards the Tatsugo Town office from the Tatsugo village. You will find a banner flag on the side of the road.

- ✓ BETCHE HOUSE ([Google map](#))
 Hours: 11:00AM-limited quantity
 Closed on Saturdays
 Address: 6860-3 Kuba, Tatsugo



Wi-fi

The closest Wi-fi hotspots are:

- ✓ Ryugaku-kan ([Google map](#)) next to Tatsugo town hall
 968-1 Sedome, Tatsugo
- ✓ Ryuyu-kan ([Google map](#))
 1837 Ura, Tatsugo

ATM

There are no city banks. You can find ATMs at:

- ✓ Japan Post Bank, Tatsugo branch ([Google map](#))
9:00AM – 5:00PM (Mon-Fri)
9:00AM – 12:30PM (Sat)
Closed on Sundays
1730-2 Tatsugo, Tatsugo
- ✓ Kagoshima Bank ATM in FamilyMart Tatsugo ([Google map](#))
Open 24/7
- ✓ Kagoshima Bank ATM in BigII ([Google map](#))
10:00AM – 8:00PM
Open 7 days a week
- ✓ Japan Post Bank, Naze branch ([Google map](#))
9:00AM – 9:00PM (Mon-Fri)
9:00AM – 7:00PM (Sat)
Closed on Sundays
Address: 3-10 Nazesaiwaicho, Amami

How to enjoy the village of Tatsugo



1. Japan post office
2. Shimura shoten, supporting the life of people in the village.
3. Elementary school, where 24 children are learning.
4. Bus stop "Tatsugo". Find Totoro!
5. Aikana for local specialties. Our recommendation is jam and raw sugar peanuts.
6. Hall of Benzaiten (the Goddess of Fortune), where a statue of Benzaiten sits.
7. Nanshu Saigo's Former Residence Site
8. Community center, where Taneoroshi starts.
9. Catholic church
10. Handmade driveway mirror. Take funny pictures of you reflected in the mirror.
11. Banyan tree tunnel
12. Bus stop "Tatsugo Iriguchi (Entrance)"
13. Cemetery

What is Taneoroshi?

The most significant event is Taneoroshi to be held on the 4th Friday and Saturday in October. It's to pray for a good harvest in the next year. People used to go door to door through the village and dance all night. These days we leave a community center, first visit new houses, and then travel each of 6 divided areas of the Tatsugo village in two days.

Take a walk

As the village is surrounded by Tatsugo forests and a bay called "Tatsugo wan", you will easily find paths leading down to the bay. Or you will come across other paths with line of "Fukugi" trees and banyan trees. Just let yourself get lost and explore in a maze of narrow streets and tiny alleys running across the village.



A handmade driveway mirror, a catholic church, a rest area by a vending machine.



Very rare traditional coral stonewalls, a banana tree on river side, papaya tree.



Colorful flowers and tropical fruits on gardens will amuse you



Giant banyan trees and huge plants grow thickly everywhere.
It is very nice to cool off in the shade of trees in summer.



Feel history

Tomb with Buddha statue

A mysterious buddha statue sits peacefully in the back of the Tatsugo village. It is actually a tomb, engraved with the year of 1725 and believed to be built for a historical person in the 10th or closer generation of the Kasari clan. Tatsugo town has designated it as a cultural property.



Nanshu Saigo's Former Residence Site

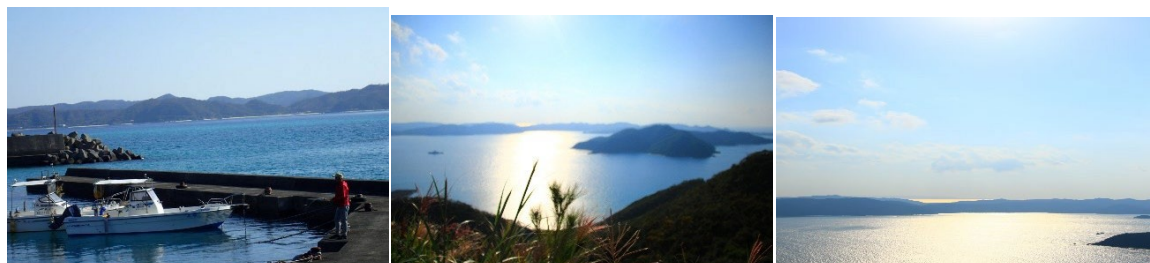
Nanshu Saigo, a.k.a. Takamori Saigo, is an important figure in Japan's history. He spent some time with his wife Aikana at this residence. If you are lucky, descendants of Aikana will take you to the residence tour.

Admission fee: JPN200 for adults, JPN100 for junior/high school students



Enjoy fishing, driving, and diving

Just grab a fishing rod and go down to a harbor. Fishing all day long will make you chilled and relaxed. Another option is to enjoy a beautiful panoramic view of the Tatsugo village and Tatsugo bay you can see on the way to the Tatsugo forest. Or stop by a diving shop in the village to explore the ocean.



Another fun part comes after dusk. Prepare the fish you caught and barbeque them in the match guest house front yard!



Find unique sceneries

'Noribari' is one of the Oshima Tsumugi silk manufacturing process. It's to apply starch made from 'igisu' seaweed to 'kasuri' silk threads. Threads are dried up in the sun so that they won't get tangled. Nowadays only several artisans inherit the 'noribari' skills. If you are lucky, you find the artisans doing 'noribari' in the village. It's always a sunny day if you find such scenery.



The elementary schoolyard next to match guest house is where people gather. Some practice 'ground golf' in the evening. Children play baseball on weekends. As temperature goes down in fall, people become enthusiastic about sports. A sumo tournament for kids is held in the schoolyard. A sports day is held also once a year, so children spend some time to practice for it.

Bus does not come that often but still very important public transportation for school

commuting. Those two bus stops in the village will give you a feeling of staying in the countryside. Even if a next bus won't come in a few hours, you might want to take a seat and have a nice chat with your friends.



The village cemetery, located in the best place to view the ocean, gets full of various fresh flowers twice a month. People in Amami Oshima traditionally visit family grave on the first and the 15th day of each month on the lunar calendar.



The other traditional events are “Hamakudari” in the end of June, celebration of the respect for the aged in September, a sports day and “Taneoroshi” in October. In addition to these yearly events, there is a monthly village-wide cleanup. Once you get closer to people in the village, they might invite you to those events.



Meet local people

Probably you won't see local residents of the village that often even though you stay at match guest house for weeks. On weekdays, young people go to work. Older adults also go to fields to grow vegetables and fruits, or other times they take care of the garden thoroughly.

If you start to miss talking to someone, it will be fun to stop by these shops in the village to have some chats while shopping.

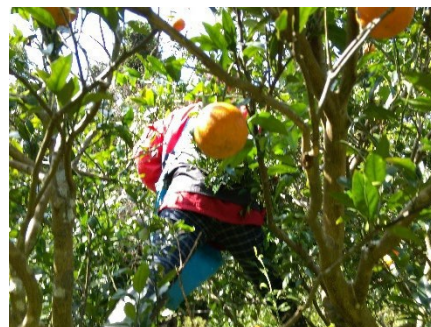
Shimura shoten opens 7 days a week from 7:00AM to 7:00PM. It's a huge relief that we can go grocery shopping anytime. In the evening, the shop is full of people back from work.



Aikana is a shop of local specialties, running by a local women's group. It opens every day except Thursday. The store is the center of the village's information. You will find raw sugar sweets, pickled papaya and local vegetables, local fruits jam, and on and on. They go well with your tea time at match guest house.



Why don't you make friends in the village, so they might share with you how to enjoy living in the village such as fishing. They might teach you how to cook local dishes or let you pick 'tankan' citrus fruits in their garden. We bet you will love such great experiences, which you cannot have in a typical sightseeing tour. Moreover, you could find a house or a land to start a new life in Amami Oshima.



Transportation

Not only in a typhoon but also in a rainy season and winter, the low clouds hang over the ocean, and the wave gets high. In such a bad weather, flights and ferries will be canceled. Please keep confirming your flight/ferry operation status in such bad weather.-

Ferry

A Line Ferry (Naze-Kouun)

Phone: +81-997-52-2316

Marix Line Ferry

Phone: +81-997-52-5151 (Kanou Transportation),
+81-997-53-3111 (Satomi Marine Transportation)

Bus

Shima Bus

Phone: +81-997-52-0509

- Bus is the only ground public transportation in the island. There is no direct bus to the Tatsugo village from the airport or the downtown (Naze). You need to transit at a bus stop in front of the Tatsugo town office.
- The closest bus stops are "Tatsugo" or "Tatsugo Iriguchi (Entrance)". Because of the limited number of buses, we recommend that you rent a car to travel efficiently.

JPN 620 from the airport to the Tatsugo town office

JPN 330 from the Tatsugo town hall to the Tatsugo village

Airport to Tatsugo (Effective from February 1st, 2020)

Timetable on weekdays

Amami airport	Departure	08:47	09:15	09:45	10:15
Tatsugo town office	Arrival	09:08	09:38	10:08	10:38
	Departure	10:48			
Tatsugo	Arriva	10:58			

Amami airport	Departure	10:45	11:15	11:45	12:15	12:45
Tatsugo town office	Arrival	11:08	11:38	12:08	12:38	13:08
	Departure	13:18				
Tatsugo	Arriva	13:28				

Amami airport	Departure	13:15	13:45	14:15	14:45	15:15
Tatsugo town office	Arrival	13:38	14:08	14:38	15:08	15:38
	Departure	14:48			15:48	
Tatsugo	Arriva	14:58			15:58	

Amami airport	Departure	15:45	16:15	16:45	17:15
Tatsugo town office	Arrival	16:08	16:38	17:20	17:38
	Departure	16:48		17:43	
Tatsugo	Arriva	16:58		17:53	

Amami airport	Departure	18:00	18:17	18:47	18:59
Tatsugo town office	Arrival	18:35	18:38	19:08	19:34
	Departure	18:52		19:28	19:53
Tatsugo	Arriva	19:02		19:38	20:03

Timetable on weekends

Amami airport	Departure	08:47	09:15	09:45	10:15
Tatsugo town office	Arrival	09:08	09:38	10:08	10:38
	Departure	10:48			
Tatsugo	Arriva	10:58			

Amami airport	Departure	10:45	11:15	11:45	12:15	12:45
Tatsugo town office	Arrival	11:08	11:38	12:08	12:38	13:08
	Departure	13:18				
Tatsugo	Arriva	13:28				

Amami airport	Departure	13:15	13:45	14:15	14:45	15:15
Tatsugo town office	Arrival	13:38	14:08	14:38	15:08	15:38
	Departure	15:48				
Tatsugo	Arriva	15:58				

Amami airport	Departure	15:45	16:15	16:45	17:15	17:45
Tatsugo town office	Arrival	16:08	16:38	17:20	17:38	18:08
	Departure	16:48		18:18		
Tatsugo	Arriva	16:58		19:28		

Amami airport	Departure	18:17	18:47
Tatsugo town office	Arrival	18:38	19:08
	Departure	19:17	
Tatsugo	Arriva	19:27	

Tatsugo to Airport (Effective from February 1st, 2020)

Timetable on weekdays

Amami airport	Departure	07:28	08:35	09:14
Tatsugo town office	Arrival	07:38	08:45	09:24
	Departure	07:45	09:08	09:38
Tatsugo	Arriva	08:20	09:31	10:01

Amami airport	Departure	12:19	13:44	15:49	17:19
Tatsugo town office	Arrival	12:29	13:54	15:59	17:29
	Departure	12:38	14:08	16:04	17:34
Tatsugo	Arriva	13:01	14:31	16:32	18:02

Timetable on weekends

Amami airport	Departure	07:18	09:14	12:19	15:49	17:19
Tatsugo town office	Arrival	07:28	09:24	12:29	15:59	17:29
	Departure	07:45	09:38	12:38	16:04	17:34
Tatsugo	Arriva	08:20	10:01	13:01	16:32	18:02

Taxi

Amami Taxi

Phone: +81-997-62-2211

Address: 21-1 Akaogi Tatsugo

Designated Driving Service

In Japan, driving under the influence of alcohol is strictly prohibited. After you have alcohol at restaurants or bars, call a designated driver to make your way home. You can ask restaurants or bars where to call for designated driving service. If it's downtown (Naze), you can find designated driving service staffs around Yanigawa Parking Lot ([Google map](#)). Before departure, tell the driver where to drop you and make sure the price.

BBQ tool set rental

We have all following BBQ tool set in a gray box behind the transport truck container.

- A BBQ grill
 - A set of charcoal tongs
 - A set of kitchen tongs
 - An ash bucket
 - Five rechargeable lanterns and a charger
- Feel free to use other items left by former guests.



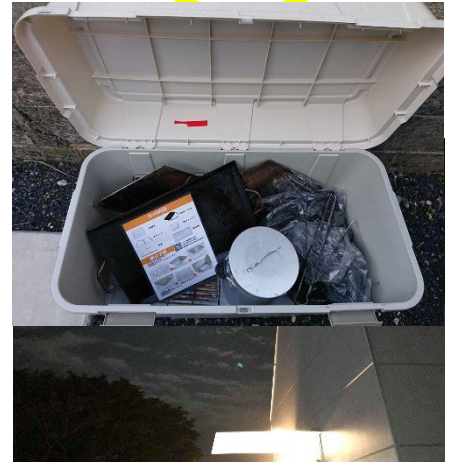
Charcoal and other BBQ items

You can purchase them at Big II (15 min by car)

BBQ food

You can purchase them at

- ✓ Big II
- ✓ Masan ichiba (13 min by car) for fresh local seafood and vegetables
- ✓ Shigeno shoten (8 min by car) for anything you forget to buy as they open until late 9:00PM. Ice cubes are available.
- ✓ Shimura shoten (5 min on foot) for more beers and shochu (brown sugar hard liquor). They open until 7:00PM.



Please wash, dry, and return those rental items to the gray box after you enjoy BBQ!

Emergency Phone Number

+81-70-6656-0278 (Sato)



271 Aza Minato, Tatsugo, Oshima-gun
Kagoshima 894-0321

Phone: +81-70-6656-0278 (Sato)

match@npo-nr.org

https://npo-nr.org/match_guest_house/

(operated by <http://npo-nr.org/>)

