

match guest house



VOL.2502

A User's Guide Everything you need to know for an amazing stay at match guest house

Welcome!

match guest house is a house complex located in the Tatsugo village, northern Amami Oshima. We are happy to help you understand what is like living in the island's village.

Please relax, unwind, have fun, and enjoy your adventure in Amami Oshima!

Table of contents

Welcome to the Tatsugo village!	・・・3
Check in/Check out	・・・4
About the home	・・・5
Safety info & house rules	・・・9
Garbage and waste sorting	・・・10
Terms and conditions	・・・11
Advice for Tatsugo life	・・・12
How to enjoy the Tatsugo village	・・・14
Transportation	・・・19
Emergency phone number	・・・21

Others

- About the evacuation center
- About recommended shops

Welcome to the Tatsugo village!



1554-1, Tatsugo, Tatshgo-cho

[Google map](#)



Check in/Check out

Check-in time: 2:00PM – 6:00PM

- Please let us know the estimated time of arrival (flight/ferry info as well if applicable) in advance, so We will put the key in the mail box according to your arrival time, so please open the key yourself and enter.
- In line with the law, if you are a non-Japanese national, please fill out the guest registration form upon arrival.
- If you do not live in Japan, we will ask you to show your passport under the law.
- If you live in Japan, we will ask you to show your ID issued in Japan such as a driver's license.

Check-out time: 11:00AM

Please lock the door and put it in the mail box before leaving the accommodation.

About the home



WiFi

SSID: elecon-2d8a9b
key: cdfdh77cmtwn

parking

Free parking space for a car per house.

air conditioning

travel guidebooks/brochures, first aid kit (band-aid, thermometer), insecticide, flashlight, an umbrella

living room

travel guidebooks/brochures, first aid kit (band-aid, thermometer), insecticide, flashlight, an umbrella

✂ There are multiple guidebooks that you can take home with you.

kitchen

air conditioner, refrigerator, microwave, gas stove(no oven), tableware (plates, dishes, bowls, cups, glasses), cutlery , cookware (saucepan, frying pan, tea kettle, cutting board, knife, colander & bowl set, cooking chopsticks, etc.), corkscrew, can opener, paper towels, dish soap, scrub sponge, hand wash, table, chairs, trash bags, trash cans/combustible items, etc.

✂We offer coffee and tea as welcome drinks.Please help yourself.



bedroom

air conditioner, bed linens, clothes hangers, closet(under the bed)

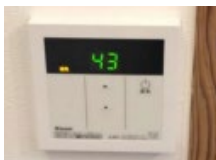
bath/toilet

hand sanitizer, shower, electronic bidet, toilet papers, sink, hand towel, bath towel, body wash, shampoo, conditioner, hand wash, toothbrush holder, hair dryer, facial tissue, bathmat, washing machine (no dryer), indoor laundry line, hanging dryer with clips, mesh laundry bag, laundry detergent (paid), vacuum cleaner, disposable toilet brush

✂ **Toothbrush, hairbrush, and nightwear are not provided.**

✂ **A laundry detergent gel ball is available for JPY50.**

✂ **To use hot water in shower/kitchen sink.The heater switch on the kitchen wall. Please switch off after use.**



Frontyard/Backyard

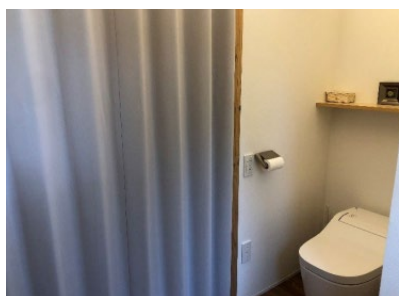
patio table, chairs, clothesline, trush, sink (for filleting fish)
ashtray (Please let us know before check-in)



● If you make a reservation, we will provide an ashtray outside. Remember to keep certain amount of water in the for safety, and to keep the area clean.

other

- ✘ Tap water is drinkable.
- ✘ There is no TV.
- ✘ Shoes are strictly prohibited inside the building.
- ✘ Please do not dye your hair in the bathroom.
- ✘ No smoking inside the room.
- ✘ Only shower is available. No bathtub in the house.
- ✘ The bedroom and the bathroom are separated by a curtain, not a door.



● A portable night light can be found on the wall by the sofa. Just unplug it and plug into any room's outlet you want. It will be automatically turned on when the room gets dark.

To Borrow or Buy

■販売アメニティ / pay-amenity

税込み/Tax included

	単価/Unit Price	
	6泊未満 2～5nights	6泊以上 6nights～
洗濯用洗剤/laundry detergent	¥50	¥50

■貸出備品/Rental items

税込み/ included

	単価/Unit Price	
	6泊未満 2～5nights	6泊以上 6nights～
小型扇風機/small fan	free	free
布団干し/clothesline	free	free
土鍋（大・小）/clay pot	free	free
吸い殻入れ/ashtray	free	free
トースター/ toaster	¥1,000	free
炊飯器/rice cooker	¥1,000	free
自転車（先着1台）/bicycle(first one)	¥1,000	free
電動アシスト自転車（先着1台）/e-bike(first one)	¥2,500	¥3,000/month
バーベキューセット（炭、バーナーはありません）/ barbecue set（except charcoal,gas burner）	free	free
折りたたみ椅子（最大6脚）/camp chair（up to 6）	free	free
外付けモニター23インチ（先着1台）/ 23inch monitor(first one)	¥4,000	¥2,000/month
USB 接続グラフィックアダプター/graphic adapter	free	free
USB 充電器 AC アダプター 5ポート/charger	free	free
延長コード（3m）/extension cord（3m）	free	free
HDMI ケーブル（1.5m）/HDMI cable（1.5m）	free	free

Safety info & house rules

■ We provide consumable supplies enough for a week stay. When any of them run out, please refill them yourself.

■ Housekeeping service is available once per week after a week stay. Our property manager will do a quick clean, replace linens, and refill the supplies once a week. If you do not need this weekly quick clean, let us know on your arrival. In that case, please refill the supplies yourself.

■ We provide consumable supplies enough for a week stay. When any of them run out, please refill them yourself.

■ Quiet hours are after 9 p.m. As the house is in quiet neighborhood surrounded by mountains, loud and rowdy voice/music echo through the village. Please do not prevent people in the village from getting a good sleep.

■ Alarm will go off if smoke/gas detectors sense an extreme heat or smoke in the kitchen. Please call us immediately in that case.

Garbage and waste sorting

Tatsugo town has strict rules to throw garbage (and waste).

Non-burnable /incombustible	Batteries, metals, ceramics, glass items, cans, etc.
burnable /combustible	Other than the above: paper, plastic containers and packaging, kitchen waste, and so on.
plastic bottles	Peel off the lid and label of plastic bottles and throw them away.

- When trash piles up, please move it to the trash can in the back.
- Burnable garbage is in yellow bags. Non-burnable is in blue bags. Plastic bottle is in transparent bags.



- On the right is for burnable garbage.
- On the middle is for cans and bottles.
- On the left is for plastic bottles.

Terms and conditions

Applicable laws and regulations are applied to any matters not covered in this section.

All guests are not allowed to bring following items to the house and the property:

- Items give out an extraordinarily bad/strange smell.
- Gunpowder, explosives, corrosive items, ignitable/inflammable items, or other articles which are likely to cause a hazard or risk to other guests and the houses.
- Items prohibited by law to use or to possess such as firearms, swords, drugs, designer drugs, and so on.

Removing or altering any fixtures and equipment are not allowed.

Damage to rooms, fixtures, furnishing, and equipment including the removal of electronic equipment, towels, etc. will be charged at 100% of full and new replacement value plus any shipping and handling charges. If unreported damages are found right after you have checked out, you will be charged likewise.

We assume no liability for lost, misplaced, stolen, or damaged personal valuables or belongings.

If excess usage of utilities (electricity, gas, water/sewer, etc.) is found after your departure, you will be charged according to the excess amount of usage.

We are not liable for any accident, injury, loss or damage to your property, etc. if it is caused by your fault, negligence caused by you, or force majeure such as natural disaster.

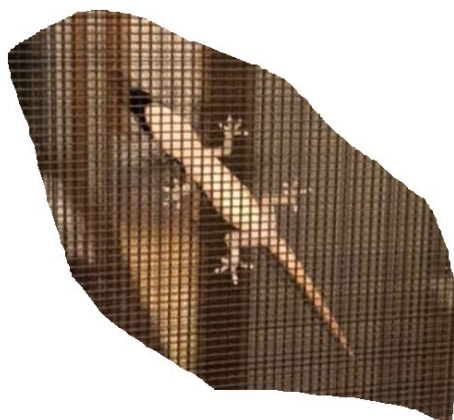
If the house key is lost or stolen, you will be charged for the total replacement costs.

Advice for Tatsugo Life

Beware of **Habu**! It's a nocturnal poisonous snake (1-2m/3-6ft) living on Amami Oshima. Habus are highly active at night and stay in shade and shelter during the day. They are also good climbers and swimmers. For night out, always carry a flashlight with you to pay attention to your steps. As they can feel heat radiated from you, do not get closer to or enter bush area day or night. If you encounter a Habu, just stay away from them.



Yamori, literally means 'house protector' in Japanese, are geckos commonly found in and outside houses on Amami Oshima. They are beneficial to us by eating unwanted bugs around the house. Please don't be surprised by their chirping or clicking noise. Yes, they cry!



May and June are the rainy season. Please close windows and curtains as winged ants will fly in.



swarms of winged bug in early fall

WiFi spot

The closest Wi-fi hotspots are:

☑ Ryugaku-kan next to Tatsugo town hall 968-1 Sedome, Tatsugo

ATM

There are no city banks. You can find ATMs at:

☑ Japan Post Bank, Tatsugo branch

9:00AM – 5:00PM (Mon-Fri)

9:00AM – 12:30PM (Sat)

Closed on Sundays

1730-2 Tatsugo, Tatsugo

☑ Kagoshima Bank ATM in FamilyMart Tatsugo

Open 24/7

☑ Kagoshima Bank ATM in BigII

10:00AM – 8:00PM

Open 7 days a week

☑ Japan Post Bank, Naze branch

9:00AM – 9:00PM (Mon-Fri)

9:00AM – 7:00PM (Sat)

Closed on Sundays

Address: 3-10 Nazesaiwaicho, Amami

tourist map

<https://www.amami-tourism.org/pamphlet/>

How to enjoy the Tatsugo village



1. Japan post office
2. Shimura shoten, supporting the life of people in the village.
3. Elementary school, where 24 children are learning.
4. Bus stop "Tatsugo". Find Totoro!
5. Aikana for local specialties. Our recommendation is jam and raw sugar peanuts.
6. Hall of Benzaiten (the Goddess of Fortune), where a statue of Benzaiten sits.
7. Nanshu Saigo's Former Residence Site
8. Community center, where Taneoroshi starts.
9. Catholic church
10. Handmade driveway mirror. Take funny pictures of you reflected in the mirror.
11. Banyan tree tunnel
12. Bus stop "Tatsugo Iriguchi (Entrance)"
13. Cemetery

What is Taneoroshi?

The most significant event is Taneoroshi to be held on the 4th Friday and Saturday in October. It's to pray for a good harvest in the next year. People used to go door to door through the village and dance all night. These days we leave a community center, first visit new houses, and then travel each of 6 divided areas of the Tatsugo village in two days.



take a walk

As the village is surrounded by Tatsugo forests and a bay called "Tatsugo wan", you will easily find paths leading down to the bay. Or you will come across other paths with line of "Fukugi" trees and banyan trees. Just let yourself get lost and explore in a maze of narrow streets and tiny alleys running across the village.



A handmade driveway mirror, a catholic church, a rest area by a vending machine.



Very rare traditional coral stonewalls, a banana tree on river side, papaya tree.



Colorful flowers and tropical fruits on gardens will amuse you.



Giant banyan trees and huge plants grow thickly everywhere. It is very nice to cool off in the shade of trees in summer.



feel history

① Tomb with Buddha statue

A mysterious buddha statue sits peacefully in the back of the Tatsugo village. It is actually a tomb, engraved with the year of 1725 and believed to be built for a historical person in the 10th or closer generation of the Kasari clan. Tatsugo town has designated it as a cultural property.

①



②



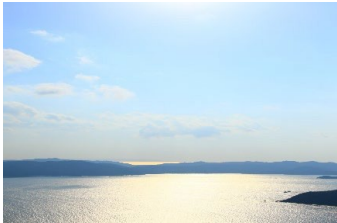
② Nanshu Saigo's Former Residence Site

Nanshu Saigo, a.k.a. Takamori Saigo, is an important figure in Japan's history. He spent some time with his wife Aikana at this residence. If you are lucky, descendants of Aikana will take you to the residence tour.

Admission fee: JPN200 for adults, JPN100 for junior/high school students.

fishing, driving, and diving

Just grab a fishing rod and go down to a harbor. Fishing all day long will make you chilled and relaxed. Another option is to enjoy a beautiful panoramic view of the Tatsugo village and Tatsugo bay you can see on the way to the Tatsugo forest. Or stop by a diving shop in the village to explore the ocean.



If you catch a fish, let's have a barbecue in garden.



Transportation

Not only in a typhoon but also in a rainy season and winter, the low clouds hang over the ocean, and the wave gets high. In such a bad weather, flights and ferries will be canceled. Please keep confirming your flight/ferry operation status in such bad weather

ferry

●A Line Ferry (Naze-Kouun)

Phone: +81-997-52-2316

●Marix Line Ferry

Phone: +81-997-52-5151 (Kanou Transportation),
+81-997-53-3111 (Satomi Marine Transportation)

bus

●Shima Bus

Phone: +81-997-52-0509

Bus is the only ground public transportation in the island. There is no direct bus to the Tatsugo village from the airport or the downtown (Naze). You need to transit at a bus stop in front of the Tatsugo town office.

The closest bus stops are "Tatsugo" or "Tatsugo Iriguchi (Entrance)". Because of the limited number of buses, we recommend that you rent a car to travel efficiently.

JPN 620 from the airport to the Tatsugo town office

JPN 330 from the Tatsugo town hall to the Tatsugo village

taxi

●Amami Taxi

Phone: +81-997-62-2211

Address: 21-1 Akaogi Tatsugo

Designated driving service

In Japan, driving under the influence of alcohol is strictly prohibited. After you have alcohol at restaurants or bars, call a designated driver to make your way home. You can ask restaurants or bars where to call for designated driving service. If it's downtown (Naze), you can find designated driving service staffs around Yanigawa Parking Lot . Before departure, tell the driver where to drop you and make sure the price.

Emergency phone number

+81-90-3440-8224(Mori)

+81-70-6656-0278 (Sato)

match
guest house

271 Aza Minato, Tatsugo, Oshima-gun
Kagoshima 894-0321

Phone: +81-70-6656-0278 (Sato)

match@npo-nr.org

https://npo-nr.org/match_guest_house/

(operated by <http://npo-nr.org/>)

